



Jennifer Tyler  
cashmere knitwear clothing

Dear Friends,  
Thank you for exploring our latest Jennifer Tyler Knitwear collection. This catalog holds a special place in my heart, as it reflects the spirit, creativity, and timeless elegance of my mother and JTK founder, Jennifer Tyler.

As we feel Jennifer's radiance, we smile, knowing that this collection is everything she loved. The soft glow of a lakeside morning, the harmony of a country garden, and the vibrancy of a Brazilian Festa, all woven into gorgeous knitwear!

We hope you enjoy these JTK styles and we look forward to working with you and speaking to you soon.

With love,  
Claire Tyler and the JTK Team

*Front cover: Renee Long Jacket - see page 17*

## ORDERING & SIZING NOTES

**SIZING** All styles are available in XS-XL, and many are stocked in XXS-XXXL. Need help? We accommodate all body types - call us!

## TO ORDER

**Call or text:** 772-675-2114 (M-F 10AM-5PM)  
or 786-553-5006 (evenings & weekends)

**Email:** [info@jennifer-t.com](mailto:info@jennifer-t.com)

**COLORS** If you love a style, but want it in a different color, just call us. We stock many additional colors and you can order any style in our Timeless Collection colors on page 37.

**SHIPPING** Please be aware that most of our styles are crafted in Italy and the UK. A wait time of 8-12 weeks is standard for custom made items or when additional pieces of our styles are being knitted.

**MODELS** Brunette: 5'3", size XS  
Blonde: 5'11", size S

[jennifer-t.com](http://jennifer-t.com)

 [@jennifertylerknitwear](https://www.instagram.com/jennifertylerknitwear)



Visit our Instagram

## WELCOME TO THE WORLD OF JENNIFER TYLER KNITWEAR

*Celebrating timeless elegance*

### STORE LOCATIONS

11950 SE Dixie Highway  
Hobe Sound, FL 33455  
772.675.2114

246 East Main Street  
Harbor Springs, MI 49740  
231.412.5000



*Love JTK*



## REYNOLDS CARDIGAN

Classic fit with elongated cable and mother of pearl buttons. Cashmere. XS-XL. Colors: White, Soft Beige, Soft Pink, Soft Peach (shown), Powder Blue, French Blue, Royal Blue, Olive, Charcoal, Black.  
\$1,295

Shown with Laing Tank. Cashmere (see page 6).



## LORI CARDIGAN

Tailored look with relaxed fit. Cashmere. XS-XL. Also available with patch pockets. Colors: White, Alabaster, Soft Beige, Soft Pink (shown), Mint, Navy, Black.  
\$895

Shown with Suzzy Henley. Cashmere (see pages 8 & 9).



## RENEE JACKET

Chanel inspired jacket with fabulous fringe trim. Cashmere. XS-XL. Colors: White, Soft Beige, Petal Pink (shown), Mint, French Blue (insert), Royal, Navy, Black.

\$1,295



## RIB FRONT CARDIGAN

Relaxed fit with shawl collar and flattering rib detail. Cashmere. XS–XL.  
Colors: Alabaster, Soft Beige, Soft Peach, Lilac (shown), Powder Blue, Dew,  
French Blue, Black.  
\$795

## LAING TANK

Jewel neck, sleeveless underpinning. Cashmere. XS–XL. Color shown:  
Lilac. All colors available to match our cardigans and jackets. See our  
Timeless Colors on page 37.  
\$395



## BRUNELSKY LONG DUSTER

Long design with V-neck and color coordinated buttons. Cashmere. XS-XL. Colors: Cream, Soft Beige, Lilac (shown), Mist, Olive, Black. Ankle length available. More colors available to order on page 37. \$1,595

Shown with Laing Tank. Cashmere (page 6) and Paloma Shawl (pages 28 and 29).





## SUZZY HENLEY

Fabulous fit with covered buttons on cuffs and neck.  
Cashmere. XS–XL. Colors: Lilac, Powder Blue, French Blue,  
Mercury (shown), Mint, Lacquer, Navy, Black.  
\$695

## LESLIE WRAP

2 ply classic wrap. Cashmere. Color: Mercury (shown).  
Available to match all JTK styles. See colors on page 37.  
\$495

## VAIL CARDIGAN

Interlocked cable and rib design with stand-up collar and easy fit. Cashmere. XS–XL. Colors: White, Soft Beige, Soft Peach, Lilac, Mercury (shown), Royal, Charcoal, Black.

\$1,195





## PALOMA SHAWL

Featherweight and luxuriously soft.  
90% Modal/10% Silk. 70cm x 180cm.  
Shown in design B. (More designs on  
page 28.)

\$295



## **PATRICIA CARDIGAN**

Easy every day cardigan with angled pockets and ribbed front trim. Cashmere. XS-XL.  
Colors: White, Soft Beige, Dew (shown), Black  
\$795

Shown with Laing Tank (page 6).



## HARRIS CARDIGAN

Short shape with lively cable and wonderful collar. Cashmere.  
XS-XL. Colors: White, Alabaster, Petal Pink, Dew (shown), Black.  
\$995

Shown with Laing Tank (page 6). Laing Tank available in shorter length in all colors.



## COLLEEN CARDIGAN

Tailored shape with slight A line. Seed stitch on cuff and front. Cashmere. XS-XL. Colors: White, Soft Beige, Soft Pink, Lilac, Lupine, Mint (shown), Powder Blue, Black.  
\$895

Shown with Laing Tank (page 6).



## HONEY CARDIGAN

Relaxed fit with allover seed stitch and pockets. Cashmere. XS–XL. Colors: White, Alabaster, Powder Blue, Mint (shown), Mercury, Peppercorn, Chocolate.  
\$1,195

Shown with Laing Tank (page 6).



## CRYSTAL SHAWL

Ultra Fine merino and silk (70/30) with hand applique of Swarovski crystals.

Colors: White, Cream (shown left), Alabaster, Soft Pink, Soft Peach, Soft Beige, Powder Blue, Mint (shown), Lilac, Navy, Black.

\$795

## MARYA CREW

Classic cashmere crewneck. Cashmere. XS-XL. Colors: White (shown). All colors available to order. See our Timeless Colors on page 37.

\$695



## RENEE LONG JACKET

Chanel inspired long jacket with hook and eye closures and gold buttons. Cashmere. XS-XL. Colors: White (shown), Lacquer (page 22), Royal, Chocolate, Black. \$1,895

Shown with Marya Crew (opposite and page 23).



## NICHOLAS VEE MENS SWEATER

Relaxed fit with classic trims. Perfect for men or women.  
Cashmere. XS-XL. Colors: White (shown), Lacquer, Navy.  
\$895

## PALOMA SHAWL

Feather weight and luxuriously soft. 90% Modal/10% Silk.  
Size: 70cm x 180cm. Shown in Pattern A. Additional designs  
and details on pages 28 & 29.  
\$295



## JOANEE PONCHO

Triple weight, shorter shape. Cashmere.

Colors: White, Cream (shown), Silver, Mint,

French Blue, Royal, Lacquer, Black.

\$695





## LEVEN JACKET

8-ply Honeycomb stitch, hand knitted with horn button.  
Made in the UK. Cashmere. XS - XL. Colors: White,  
Alabaster (shown), Petal Pink, Powder Blue, Dew, Silver,  
Peppercorn, Chocolate, Navy, Black.  
\$2,595

Shown with Marina Tee (see page 24)



White



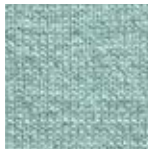
Alabaster



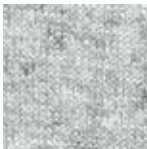
Petal Pink



Powder Blue



Dew



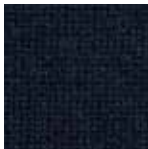
Silver



Peppercorn



Chocolate



Navy



Black



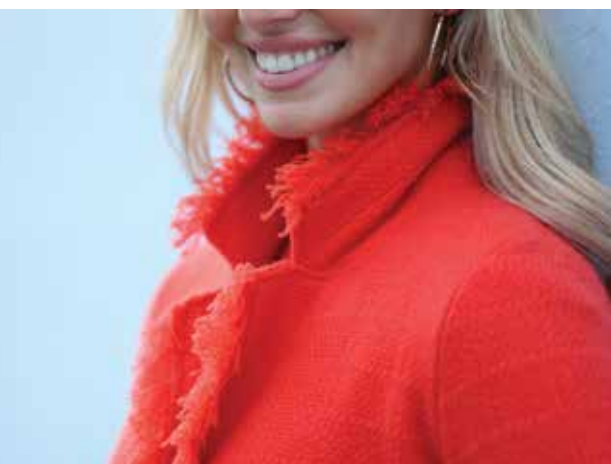
## RENEE LONG JACKET

Chanel inspired long jacket with hook and eye closures and gold buttons.

Cashmere. XS-XL.

Colors: Lacquer (shown), Royal, Chocolate, Black, White (page 17).

\$1,895



Shown with Marya Crew (opposite).



## MARYA CREW

Classic cashmere crewneck. Cashmere. XS–XL. Color shown: Lacquer. All colors available to match our JTK styles. See our Timeless Colors on page 37.

\$695

## MONET SHAWL

Shown in Design N. Additional designs and details on pages 38 & 39. 70% wool/30% silk. Size: 70cm x 180cm.

\$395



## MARINA TEE

Jewel neck, butter soft, elegant trims with 13% stretch. Eco Viscose. XS–XL. More colors available, please call or text. (Shown in cream).

\$295



white

cream



navy

black

## PARIS SHAWL

See pages 26 and 27.



beige

blush



## REYNOLDS LONG CARDIGAN

Long cabled cardigan with pearl buttons and fabulous fit. Cashmere. XS-XL.  
Colors: White, Alabaster, Soft Beige, Soft Pink, Powder Blue (page 40) Mist,  
Mint, Dew, Silver, French Blue, Royal, Chocolate (shown), Navy, Black.  
\$1,495

Shown with Marina Tee (page 24).



## PARIS SHAWL

Beautiful designs, luxuriously soft.  
Square shape. 100% Ultra-fine Merino.  
140cm X 140cm. Design 9. (See opposite.)  
\$495

Shown with Marina Tee (page 24).

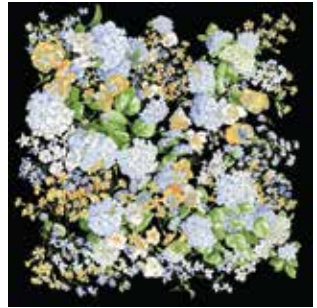
## PARIS SHAWLS



1



2



3



4



5



6



7



8



9

## PALOMA SHAWLS



A



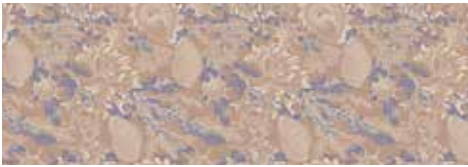
F



B



G



C



H



D



I



E



J



## PALOMA SHAWL

Feather weight and luxuriously soft.

90% Modal/10% Silk. Size: 70cm x 180cm.

Shown in Design F. Additional designs and details opposite.

\$295

Shown with Marina Tee (page 24).



## **LAURA LONG FITTED CARDIGAN**

Long lean design with back darts, pockets and side slits.

Cashmere. XS-XL. Colors: Alabaster (opposite), Mint, Mercury, Olive (shown), Navy.

Laing Tank available to match (see page 6).

\$895





## SCOTTY CABLE SWEATER

Classic cabled sweater. Cashmere. XS–XL.

Colors: White, Soft Beige, Alabaster, Peppercorn (shown),  
Lacquer, Royal, Navy, Charcoal, Black.

\$495



## FRINGE PONCHO

Stylish comfort with whimsical fringe. Cashmere. XS-XL.  
Colors: Alabaster, Peppercorn (shown).  
\$795

Shown with Marina Tee (page 24).



## BLANCHE JACKET

6-ply cashmere. Jackie O inspired with covered buttons. Handknit in the UK. XS-XL. Colors: White, Alabaster, Silver, Dew (shown), Chocolate, Navy, Black. (See color swatches on page 21.)  
\$2,195

## PARIS SHAWL

Square shape, Shown in Design 3. Additional designs and details on pages 26 & 27.  
\$495

Shown with Marina Tee (page 24)



## **KENDRA ZIP CARDIGAN**

Elegant zip up with wide trims and stand up collar. Cashmere. XS-XL.  
Colors: Cream, Soft Beige (shown), Petal Pink, Silver, Powder Blue, French Blue, Black.  
\$995

Shown with Marina Tee (page 24)



## JOAN PONCHO

Classic poncho with longer length Cashmere.  
Colors: White, Alabaster (pictured), Soft Pink, Soft  
Peach, Powder Blue, Mint, Mercury, Navy, Black.  
\$595

Shown with Marina Tee (page 24).

## CASHMERE COLOR SWATCHES



Alabaster



Black



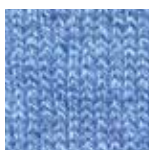
Chocolate



Cream



Dew



French Blue



Lacquer



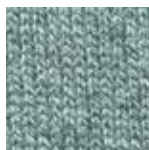
Lilac



Lisbon Blue



Lupine



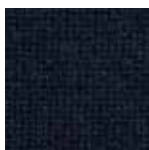
Mercury



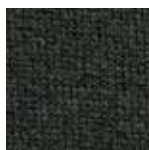
Mint



Mist



Navy



Olive



Peppercorn



Petal Pink



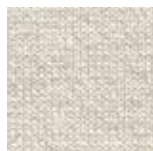
Powder Blue



Royal



Silver



Soft Beige



Soft Peach



Soft Pink



White



## MONET SHAWL

Luminous designs, ethereal feel. 70% Wool/30% Silk.

Size: 70cm x 180cm. Shown in Design M. Additional designs opposite.

\$395

Shown with Laing Tank (page 6).

# MONET SHAWL



K



L



M



N



O



P



Q



R



## REYNOLDS LONG CARDIGAN

Long cabled cardigan with pearl buttons and fabulous fit. Cashmere. XS–XL. Colors: White, Alabaster, Soft Beige, Soft Pink, Powder Blue (shown) Mist, Mint, Dew, Silver, French Blue, Royal, Chocolate (page 25), Navy, Black. \$1,495

Shown with Laing Tank (page 6).



## **BAILEY CARDIGAN**

Seed stitch short Vee cardigan. Cashmere. XS–XL.  
Colors: White, Soft Beige, Alabaster (shown),  
Powder Blue, Lilac, Olive, Lacquer, Navy, Black.  
\$795

Shown with Laing Tank (page 6).



## ALMA DUSTER

Essential evening look with side slits and fringe. 3-ply Cashmere. XS-XL.

Colors: White (shown), Black.

\$1,295



## POCKET TUNIC

Featherweight tunic with pockets. Cashmere. XS-XL. Colors: Alabaster (shown), Soft Beige, Soft Pink, French Blue, Black. \$695

## MONET SHAWL

70% Wool/30% Silk. Size: 70cm x 180cm. Shown in Design L. Additional designs and details on pages 38 & 39. \$395



## **PAILLETTE CARDIGAN**

Sophisticated shape with sparkles throughout. Cashmere with paillettes. XS-XL. Colors: White, Soft Pink, Powder Blue, Peppercorn, Black (shown).

\$1,295

## **PAILLETTE TANK**

Sparkled sleeveless underpinning. Cashmere with paillettes. XS-XL. Colors: White, Soft Pink, Powder Blue, Peppercorn, Black (shown).

\$795



## ANITA CARDIGAN

Elegant fit with inverted collar and fabulous pearl buttons. Cashmere. XS–XL. Colors: White, Cream, Silver, French Blue, Black (shown). \$995

Shown with Laing Tank (page 6).



## WAYDE COAT

A JTK favorite. Fits everyone like a dream. Perfect for travel. No wrinkles, just love. Cashmere. XS-XL. Colors: Cream (back cover), Alabaster, Camel, Bright Navy (shown), Black. \$2,595



## WINSTON COAT

Dreamy cashmere in a classic wrap style.

Available in longer length. Cashmere.

XS-XL. Colors: Cream, Alabaster, Camel (shown), Bright Navy, Black.

\$2,995

*Jennifer Tyler*  
cashmere knitwear clothing

11950 SE Dixie Highway  
Hobe Sound, FL 33455



**WAYDE  
COAT**

See page 46.

*Love JTK*